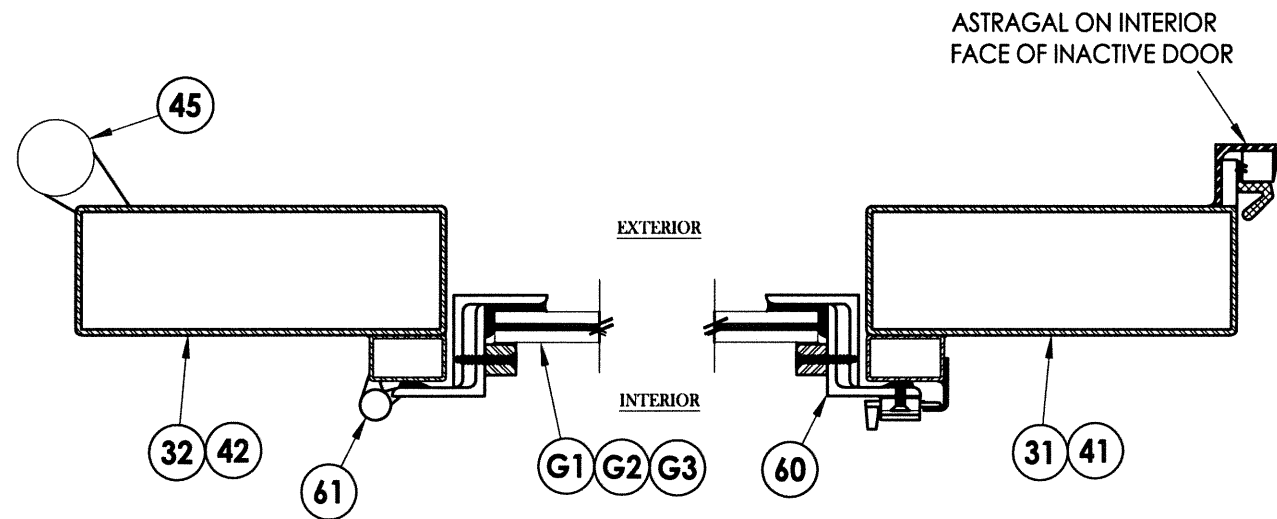
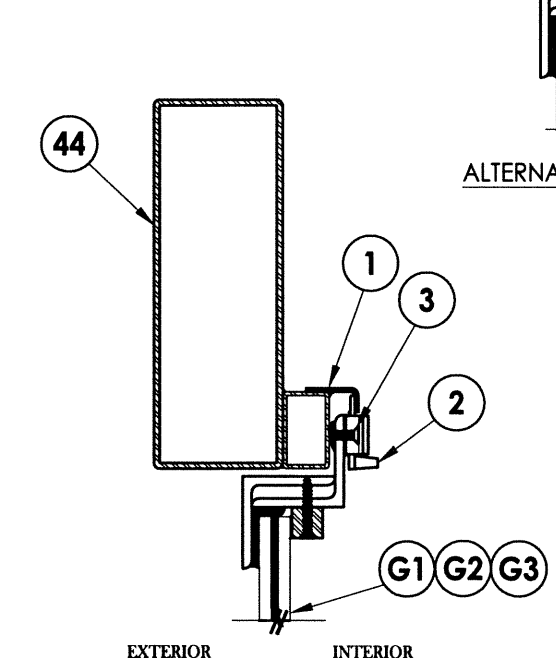


30 DOOR PANEL
w/ Operable Sash

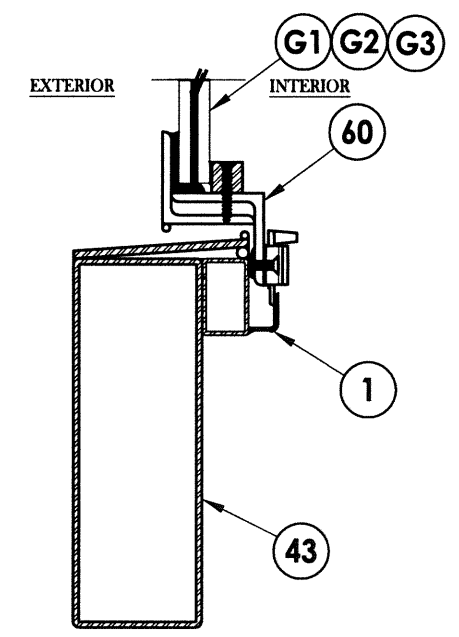
40 3/4 LITE DOOR PANEL
w/ Operable Sash



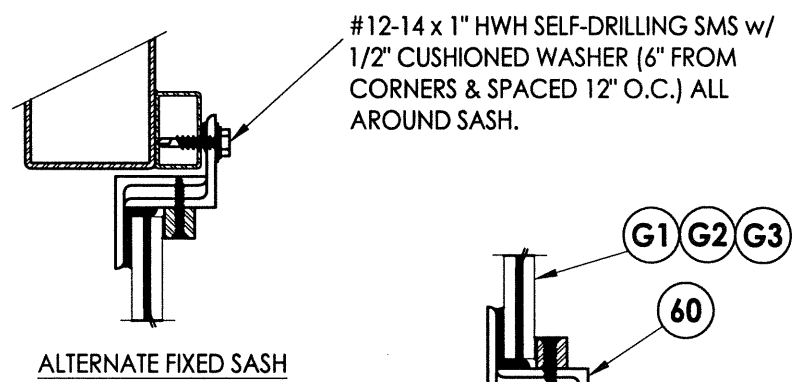
1 HORIZONTAL CROSS SECTION
2 Active Door Panel Shown



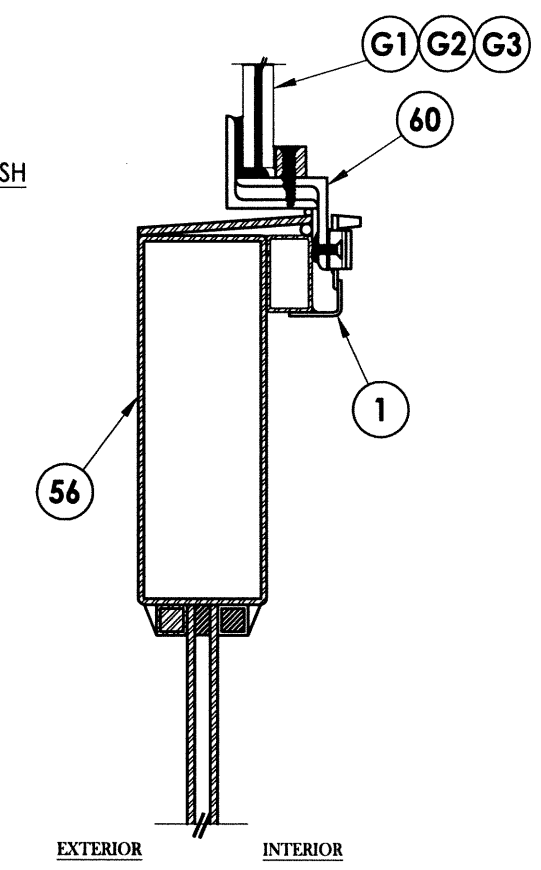
2 VERTICAL CROSS SECTION



3 VERTICAL CROSS SECTION



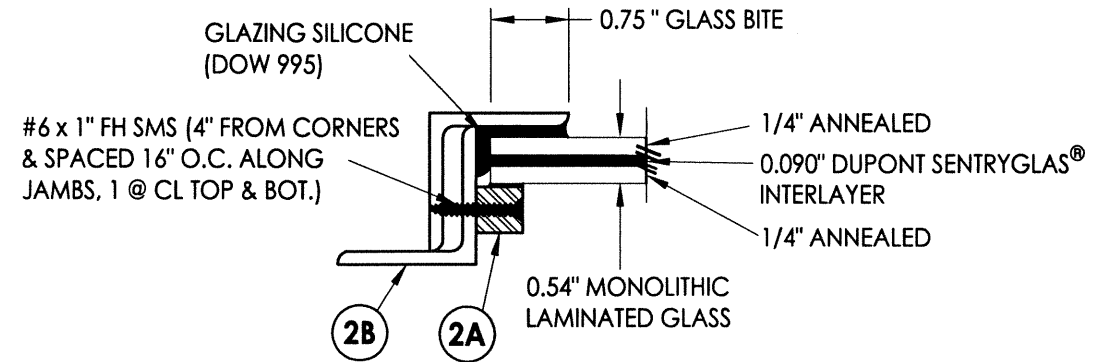
ALTERNATE FIXED SASH



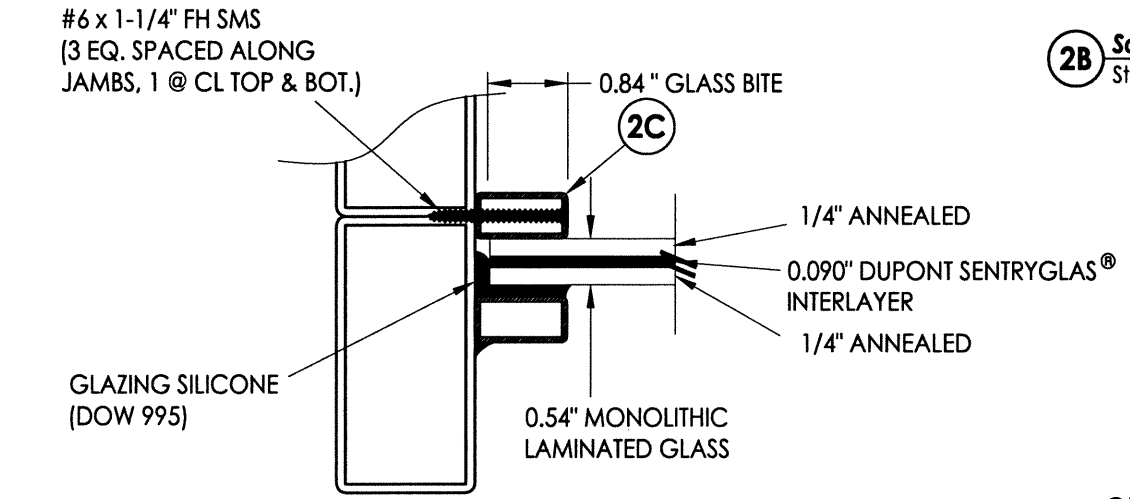
4 VERTICAL CROSS SECTION

Documents Prepared By: RW BUILDING CONSULTANTS, INC. P.O. Box 230 Vairico FL 33595 Phone No.: 813.659.9197 Florida Board of Professional Engineers Certificate Of Authorization No. 9813 <i>LF-12-30-13</i> Lyndon F. Schmidt, P.E. No. 43409	
PRODUCT: CLARK HALL IRON DOORS	PART OR ASSEMBLY: DOOR PANEL DETAILS
NO.	DATE
	BY
REVISIONS	
DATE: 11/8/13	
SCALE: N.T.S.	
DWG. BY: JK	
CHK. BY: LFS	
DRAWING NO.: FL-16663.12	
SHEET 2 OF 13	

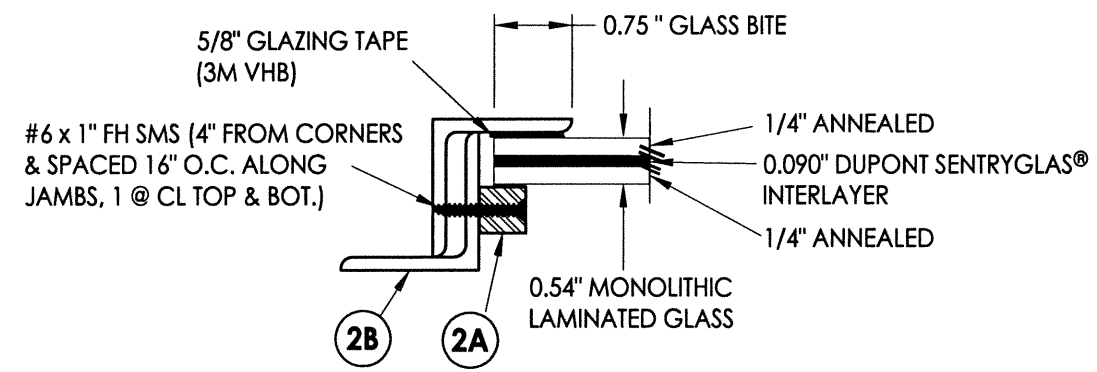
R:\A - Projects\Project Folders\Proj 1701 - 1800\PF 1733\D. RWBC Drawings\FL-16663.10-12.dwg, 4.6



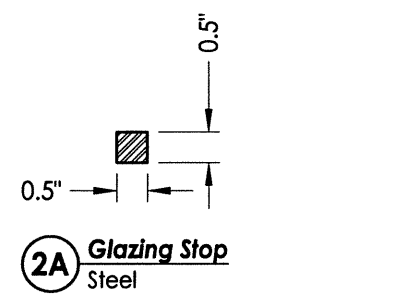
G1 GLAZING DETAIL
Operable Door/Sidelite



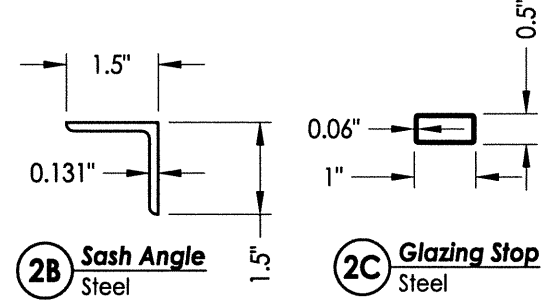
G1 GLAZING DETAIL
Fixed Sidelite/Transom



G3 GLAZING DETAIL
Operable Door/Sidelite



2A Glazing Stop
Steel

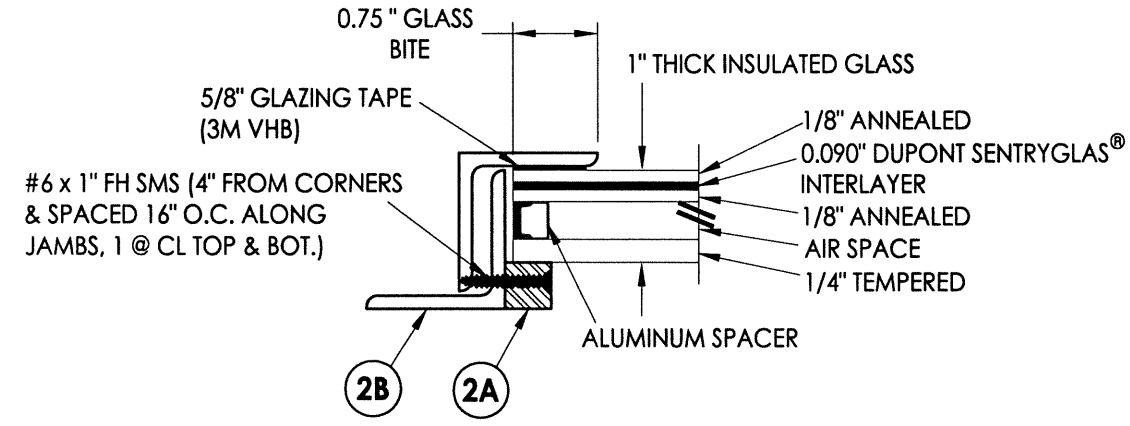


2B Sash Angle
Steel

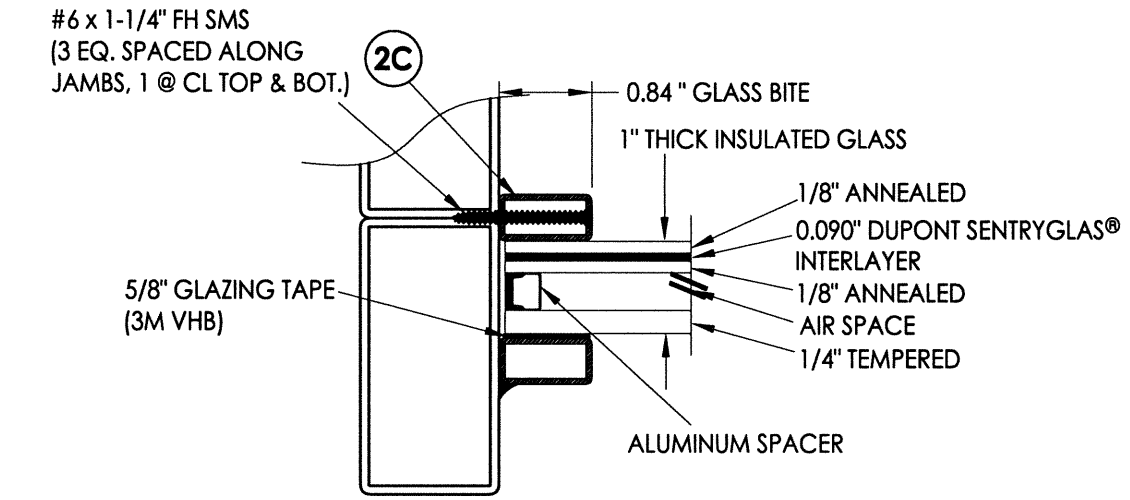
2C Glazing Stop
Steel

GLAZING DESIGN PRESSURE LIMITATIONS

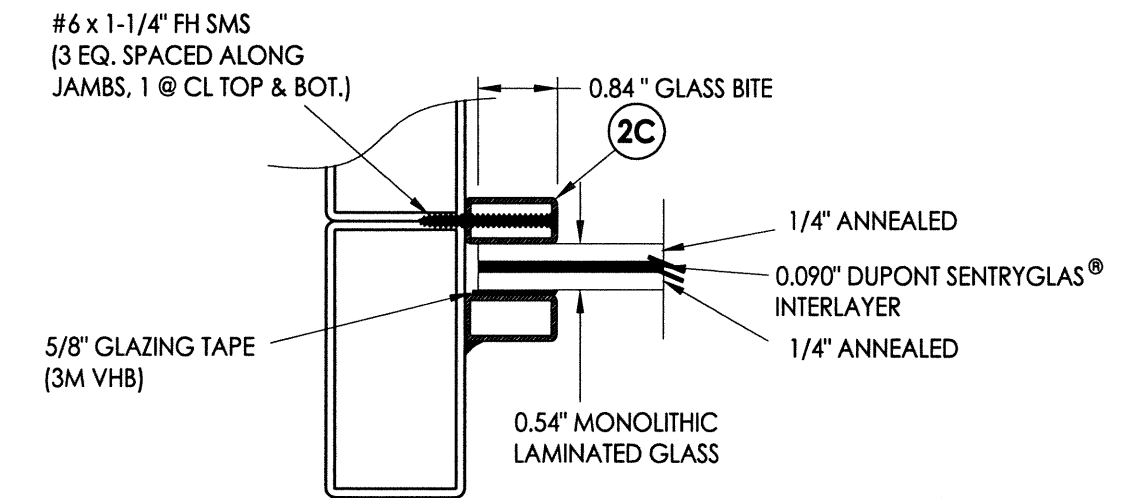
GLAZING	MAX. DESIGN PRESSURE (PSF)	
	POS.	NEG.
G1	+75.0	-75.0
G2, G3	+65.0	-65.0



G2 GLAZING DETAIL
Operable Door/Sidelite



G2 GLAZING DETAIL
Fixed Sidelite/Transom



G3 GLAZING DETAIL
Fixed Sidelite/Transom

Documents Prepared By:
RW BUILDING CONSULTANTS, INC.
 P.O. Box 230 Vairico FL 33595
 Phone No.: 813.659.9197
 Florida Board of Professional Engineers
 Certificate of Authorization No. 9813
CFR 12.30.13
 Lyndon F. Schmidt, P.E. No. 43409

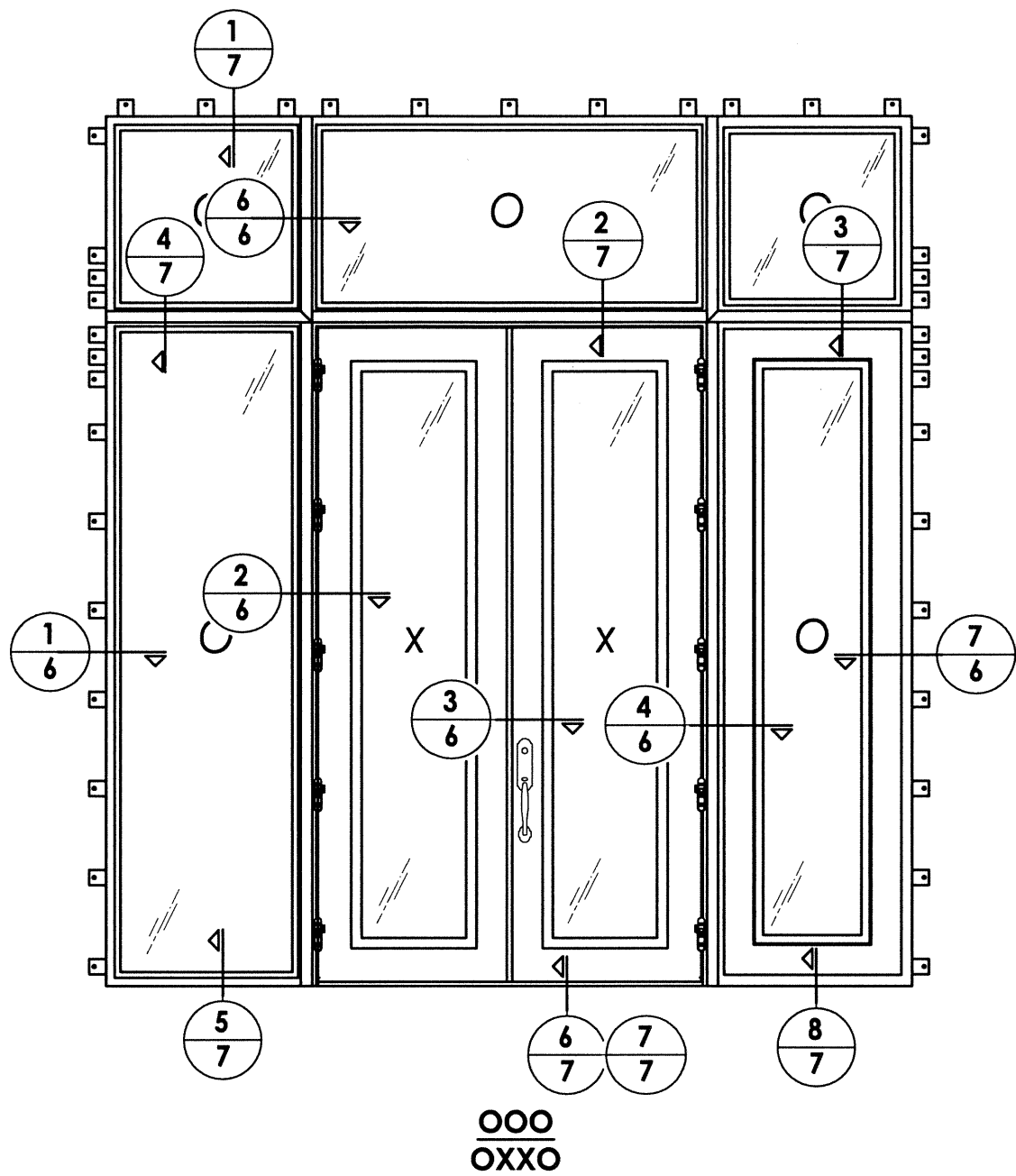
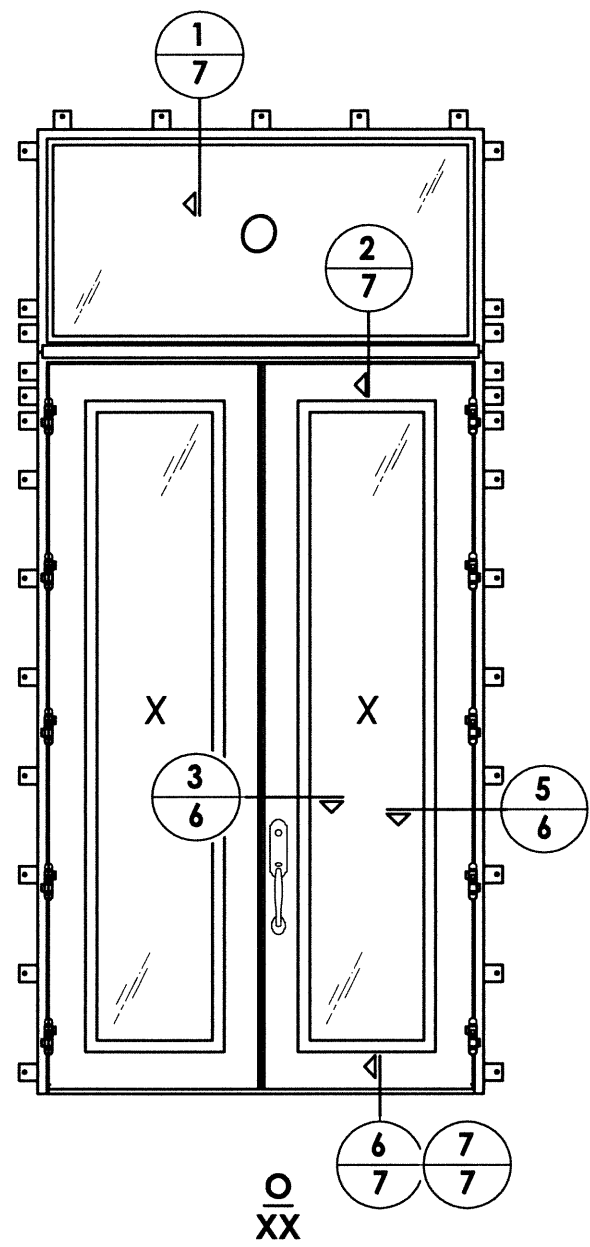
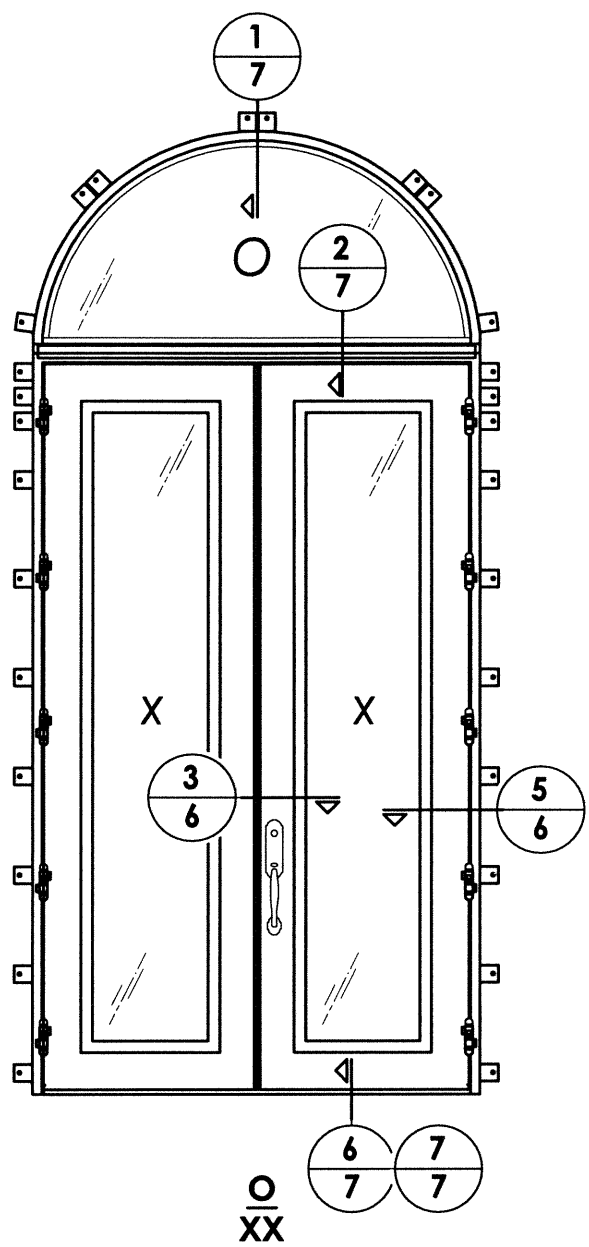
PRODUCT: CLARK HALL IRON DOORS

PART OR ASSEMBLY: GLAZING DETAILS

NO.	DATE	BY

DATE: 11/8/13
 SCALE: N.T.S.
 DWG. BY: JK
 CHK. BY: LFS
 DRAWING NO.: FL-16663.12
 SHEET 4 OF 13

R:\A - Projects\Project Folders\Proj 1701 - 1800\PF 1733\D. RWBC Drawings\FL-16663.10-12.dwg, 5.6



LOCK HARDWARE DESIGN PRESSURE LIMITATIONS

MANUFACTURER	MODEL	MAX. DESIGN PRESSURE (PSF)	
		POS.	NEG.
EMTEK	TUBULAR ENTRY SET (SHERIDAN - 451812)	+75.0	-75.0
SUN VALLEY BRONZE ACCURATE LOCK & HARDWARE	LEVER/KNOB ENTRY SET (RIDGE: CS-421PLD) MORTISE LOCK	+65.0	-65.0
ASHLEY NORTON	TUBULAR ENTRY SET (SQTUB w/ 900 SERIES KNOB)	+65.0	-65.0
ASHLEY NORTON ACCURATE LOCK & HARDWARE	MORTISE LOCK (SQMOR w/ 900 SERIES KNOB) MORTISE LOCK	+65.0	-65.0

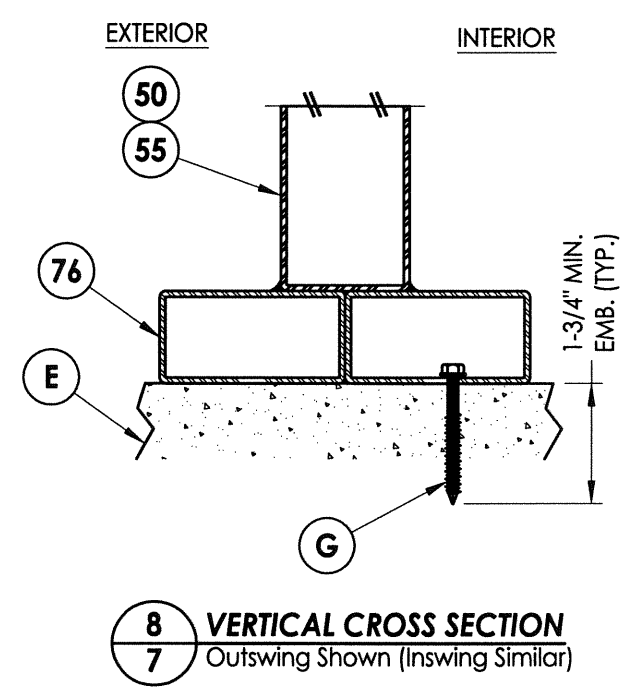
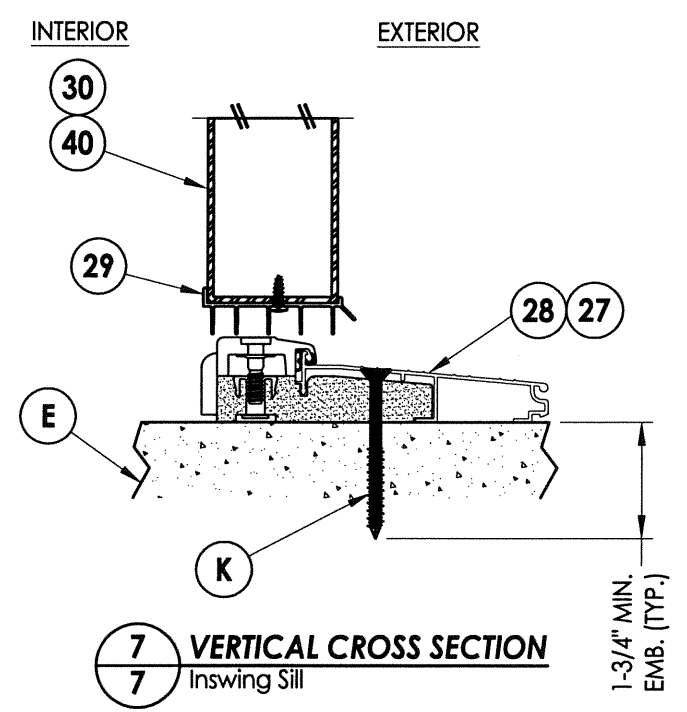
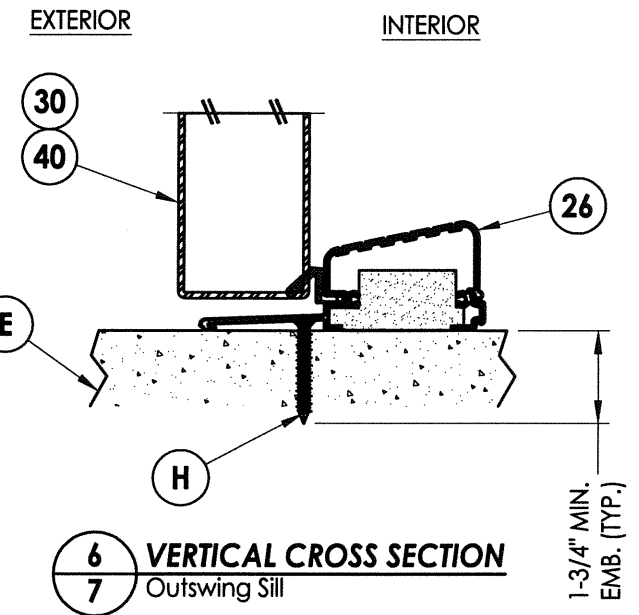
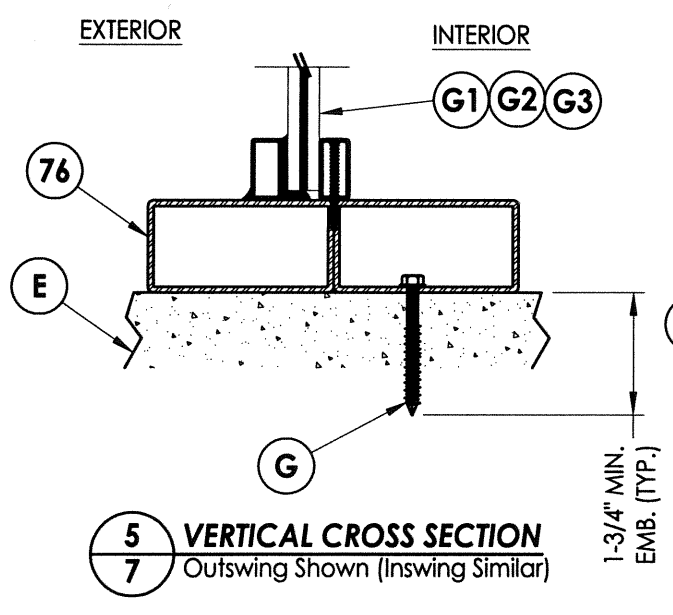
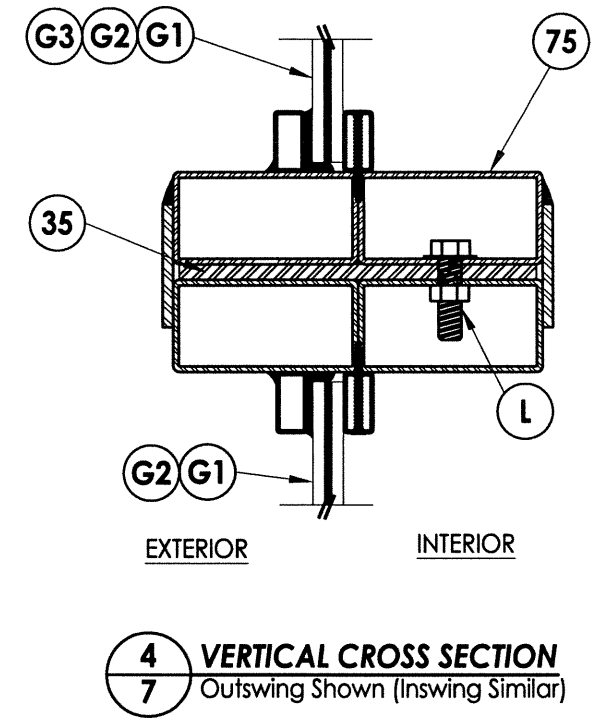
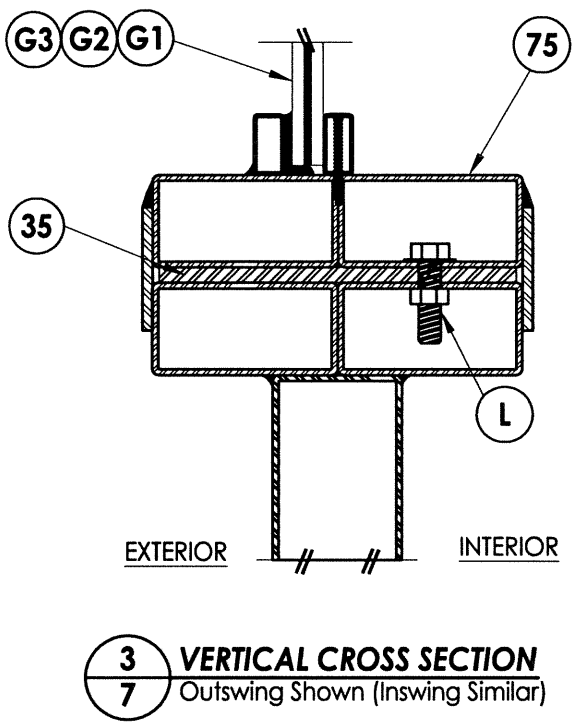
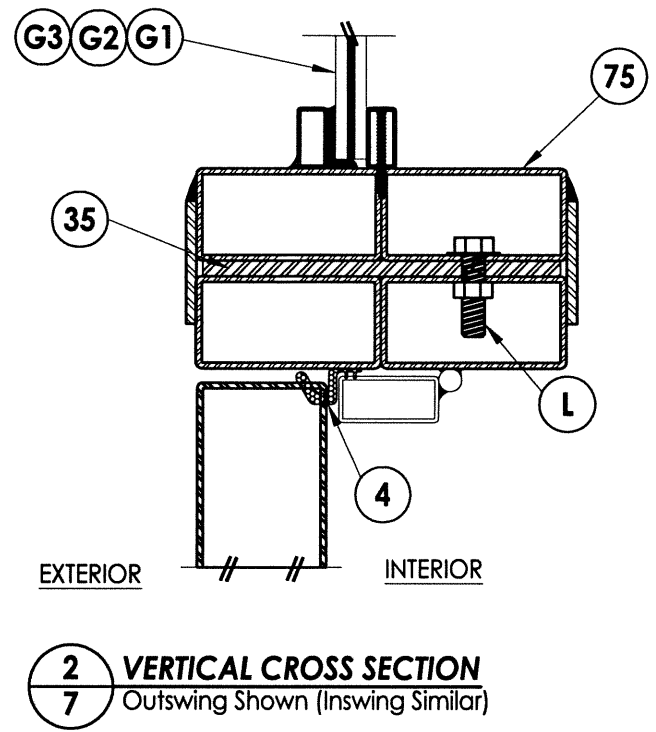
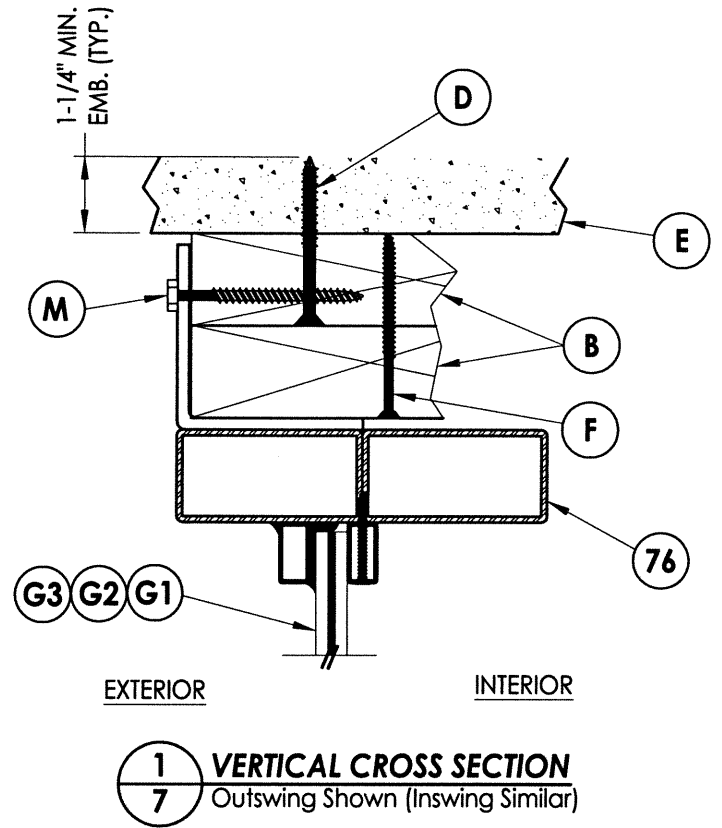
Documents Prepared By:
RW BUILDING CONSULTANTS, INC.
 P.O. Box 230 Valrico FL 33595
 Phone No.: 813.659.9197
 Florida Board of Professional Engineers
 Certificate Of Authorization No. 9813
 Lyndon F. Schmidt, P.E. No. 43409

PRODUCT: CLARK HALL IRON DOORS
 PART OR ASSEMBLY: ELEVATIONS

NO.	DATE	BY

DATE: 11/8/13
 SCALE: N.T.S.
 DWG. BY: JK
 CHK. BY: LFS
 DRAWING NO.: FL-16663.12
 SHEET 5 OF 13

R:\A - Projects\Project Folders\Proj 1701 - 1800\PF 1733\D. RWBC Drawings\FL-16663.10-12.dwg, 7.6



Documents Prepared By:
RW BUILDING CONSULTANTS, INC.
 P.O. Box 230 Valrico FL, 33595
 Phone No.: 813.659.9197
 Florida Board of Professional Engineers
 Certificate Of Authorization No. 9813
 12-30-13
 Lyndon F. Schmidt, P.E. No. 43409

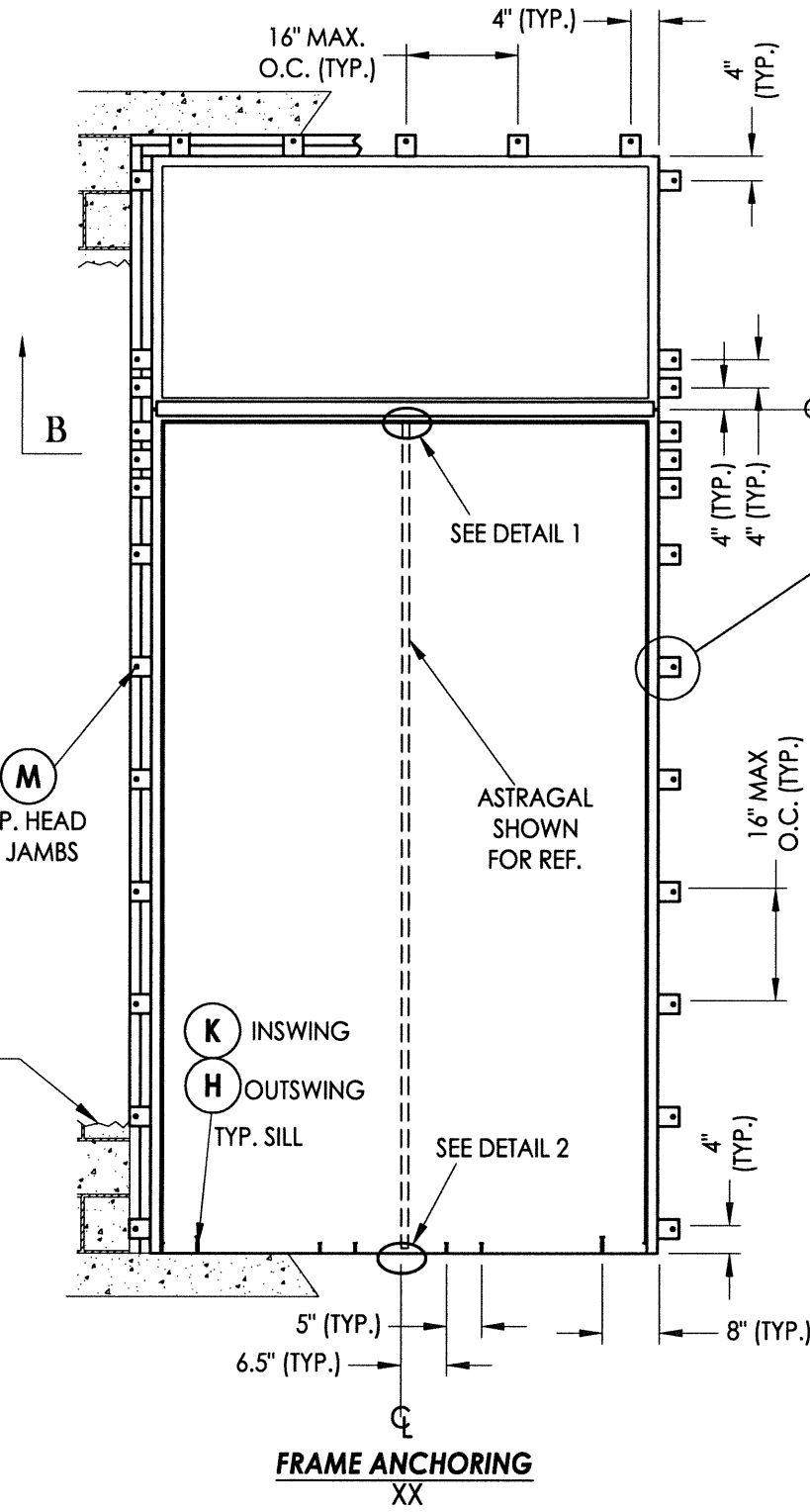
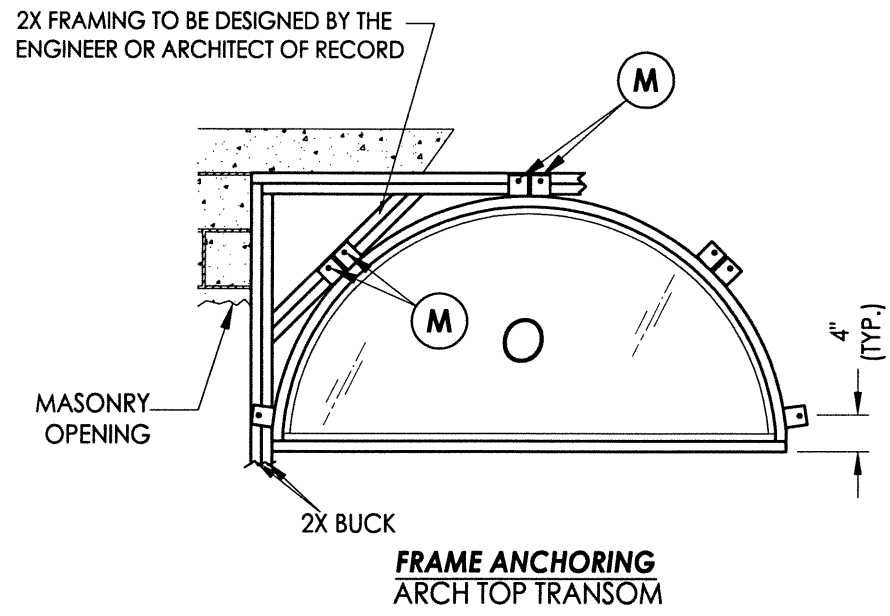
PRODUCT: CLARK HALL IRON DOORS
 PART OR ASSEMBLY: VERTICAL CROSS SECTIONS

NO.	DATE	BY	REVISIONS

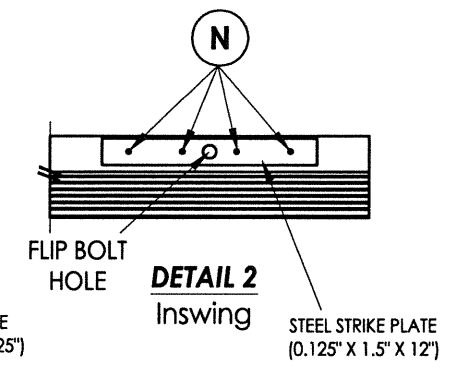
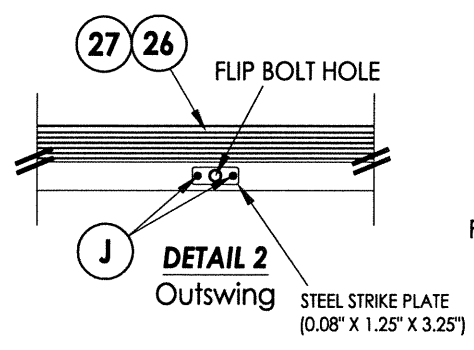
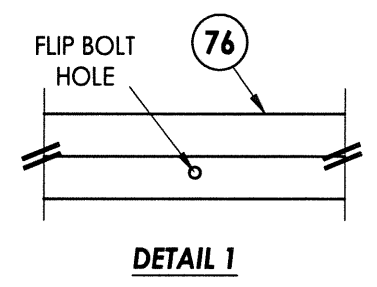
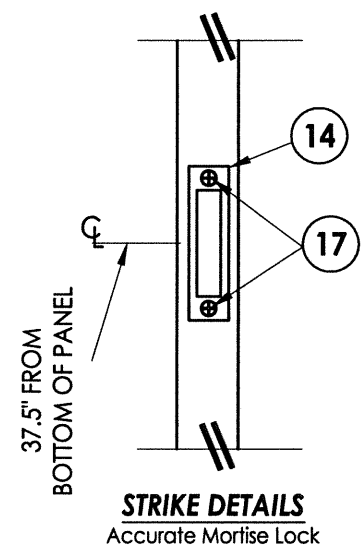
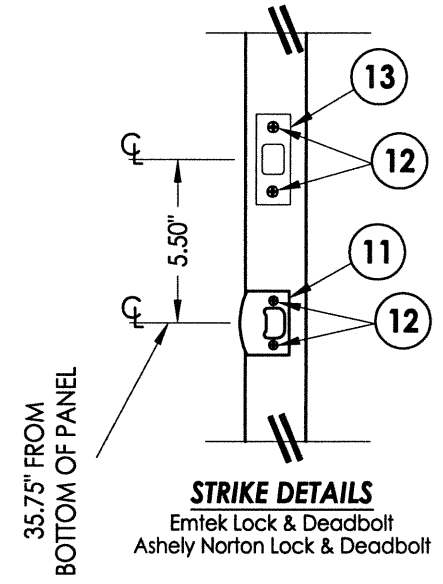
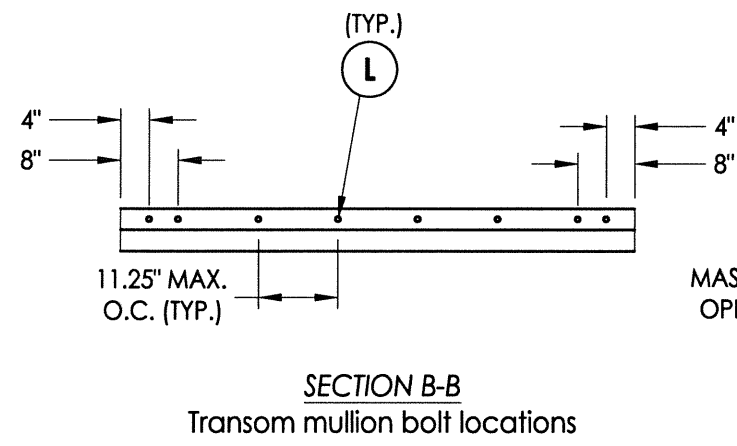
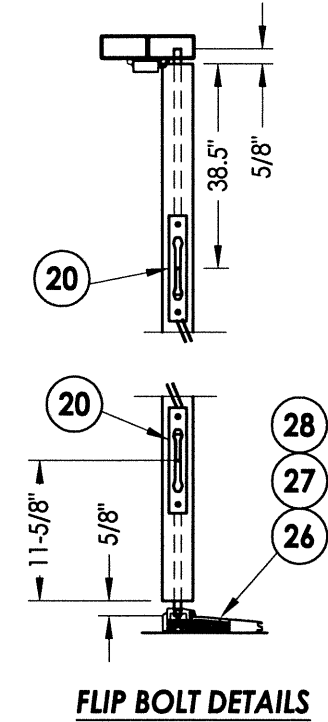
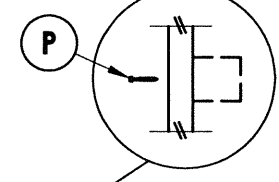
DATE: 11/8/13
 SCALE: N.T.S.
 DWG. BY: JK
 CHK. BY: LFS
 DRAWING NO.: FL-16663.12
 SHEET 7 OF 13

© 2013 R.W. BUILDING CONSULTANTS INC.

R:\A - Projects\Project Folders\Proj 1701 - 1800\PF 1733D - RWBC Drawings\FL-16663.10-12.dwg, 9.6



ALTERNATE ANCHORING
THROUGH THE FRAME
SUBSTITUTE ANCHOR @ EACH BRACKET



CONCRETE ANCHOR NOTES:

1. Concrete anchor locations at the corners may be adjusted to maintain the min. edge distance to mortar joints.
2. Concrete anchor locations noted as "MAX. ON CENTER" must be adjusted to maintain the min. edge distance to mortar joints, additional concrete anchors may be required to ensure the "MAX. ON CENTER" dimension are not exceeded.
3. Concrete anchor table:

ANCHOR TYPE	ANCHOR SIZE	MIN. EMBEDMENT	MIN. CLEARANCE TO MASONRY EDGE	MIN. CLEARANCE TO ADJACENT ANCHOR
ITW TAPCON®	3/16"	1-1/4"	3"	2-1/2"
	1/4"	1-1/4"	2-1/2"	4"
	5/16" (XL)	1-3/4"	2-1/2"	5"
ELCO ULTRACON®	1/4"	1-1/4"	2-1/2"	4"
	5/16"	1-3/4"	2-1/2"	5"

Documents Prepared By: **RW BUILDING CONSULTANTS, INC.**
P.O. Box 230 Valrico FL 33595
Phone No.: 813.659.9197
Florida Board of Professional Engineers
Certificate Of Authorization No. 9813
17012-8-13
Lyndon F. Schmidt, P.E. No. 43409

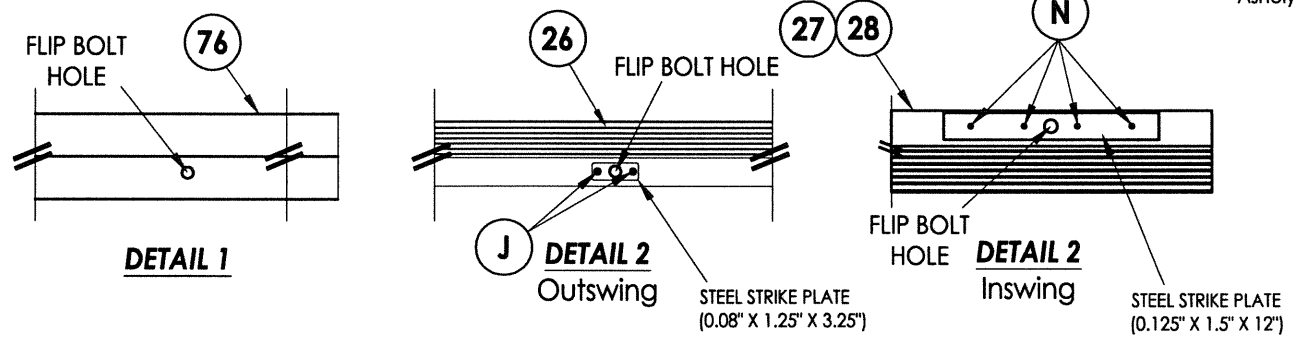
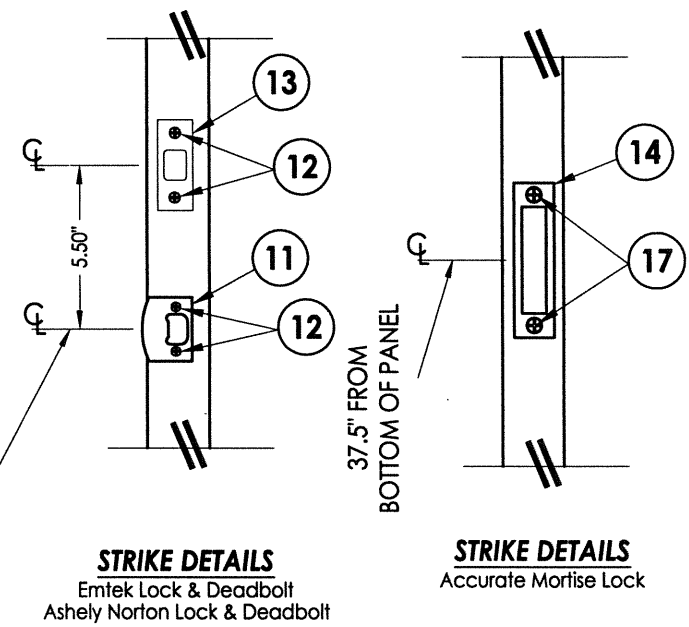
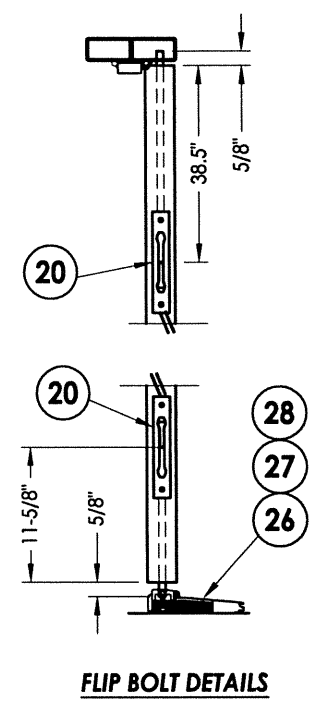
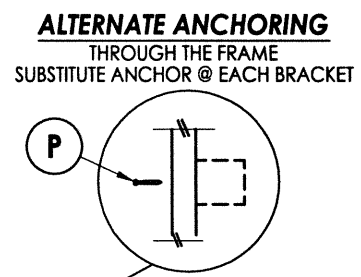
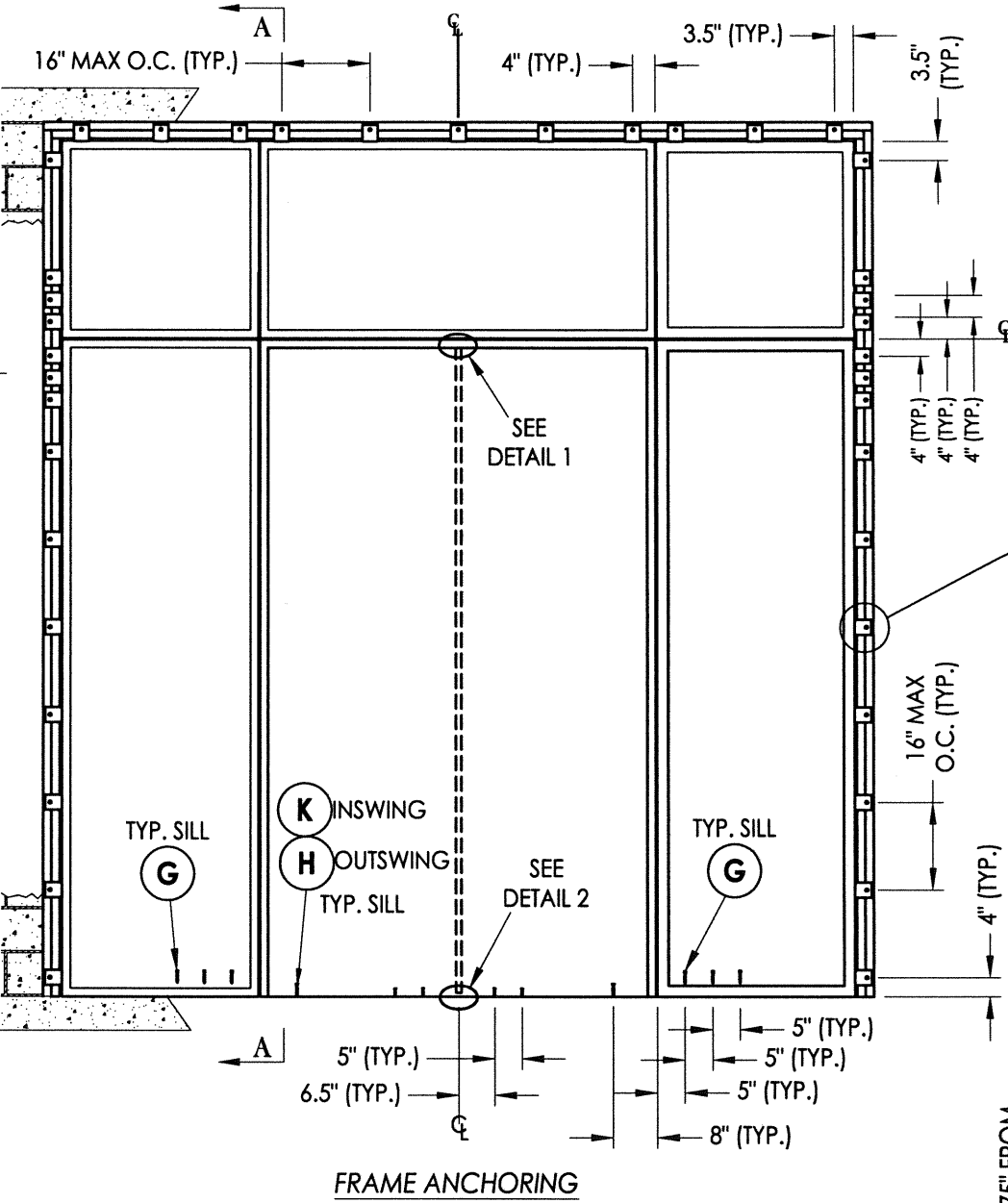
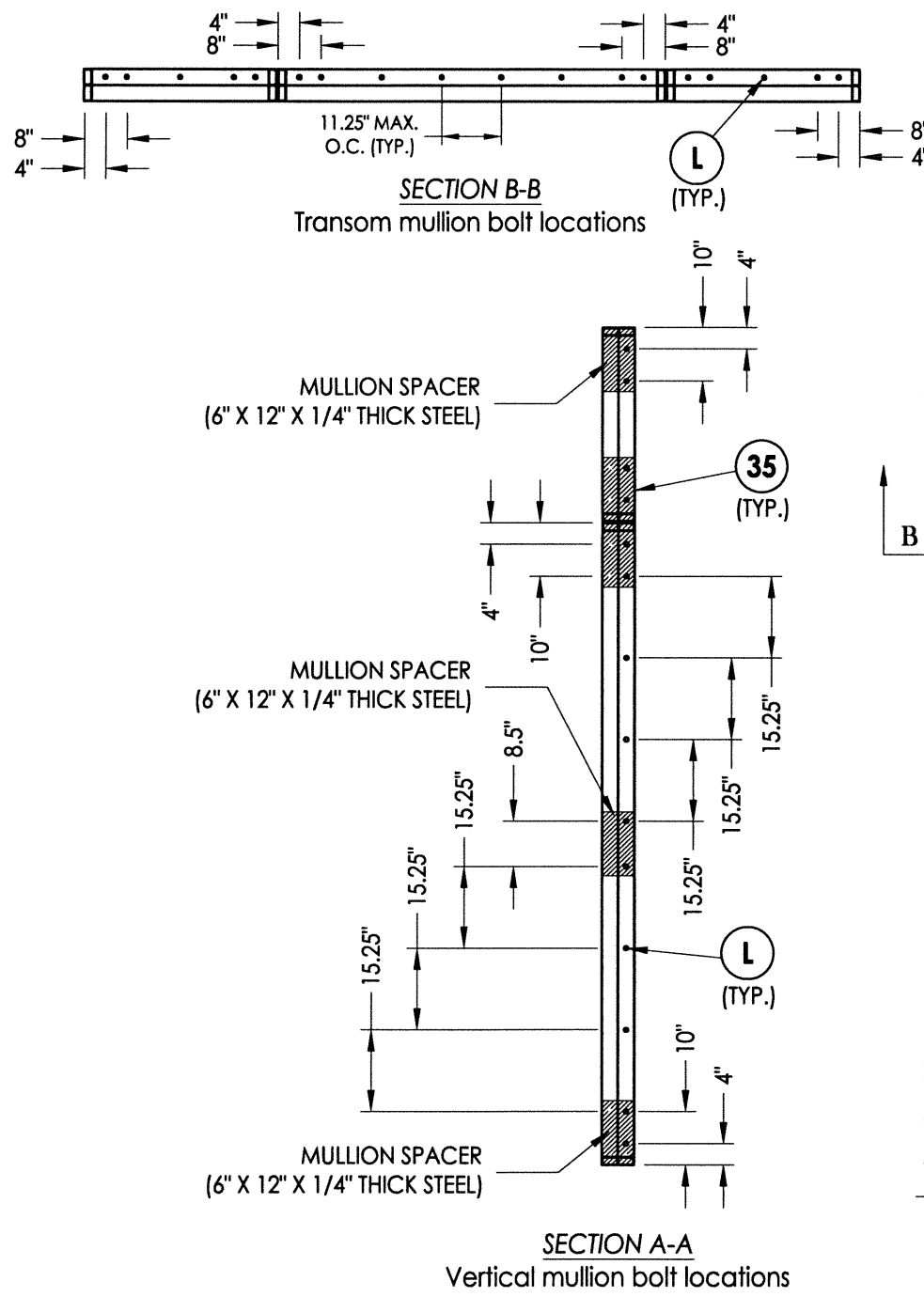
PRODUCT: CLARK HALL IRON DOORS
PART OR ASSEMBLY: FRAME ANCHORING

NO.	DATE	BY	REVISIONS

DATE: 11/8/13
SCALE: N.T.S.
DWG. BY: JK
CHK. BY: LFS
DRAWING NO.: FL-16663.12
SHEET 9 OF 13

© 2013 R.W. BUILDING CONSULTANTS INC.

R:\A - Projects\Project Folders\Proj 1701 - 1800\PF 1733\D. RWBC Drawings\FL-16663.10-12.dwg, 10.6

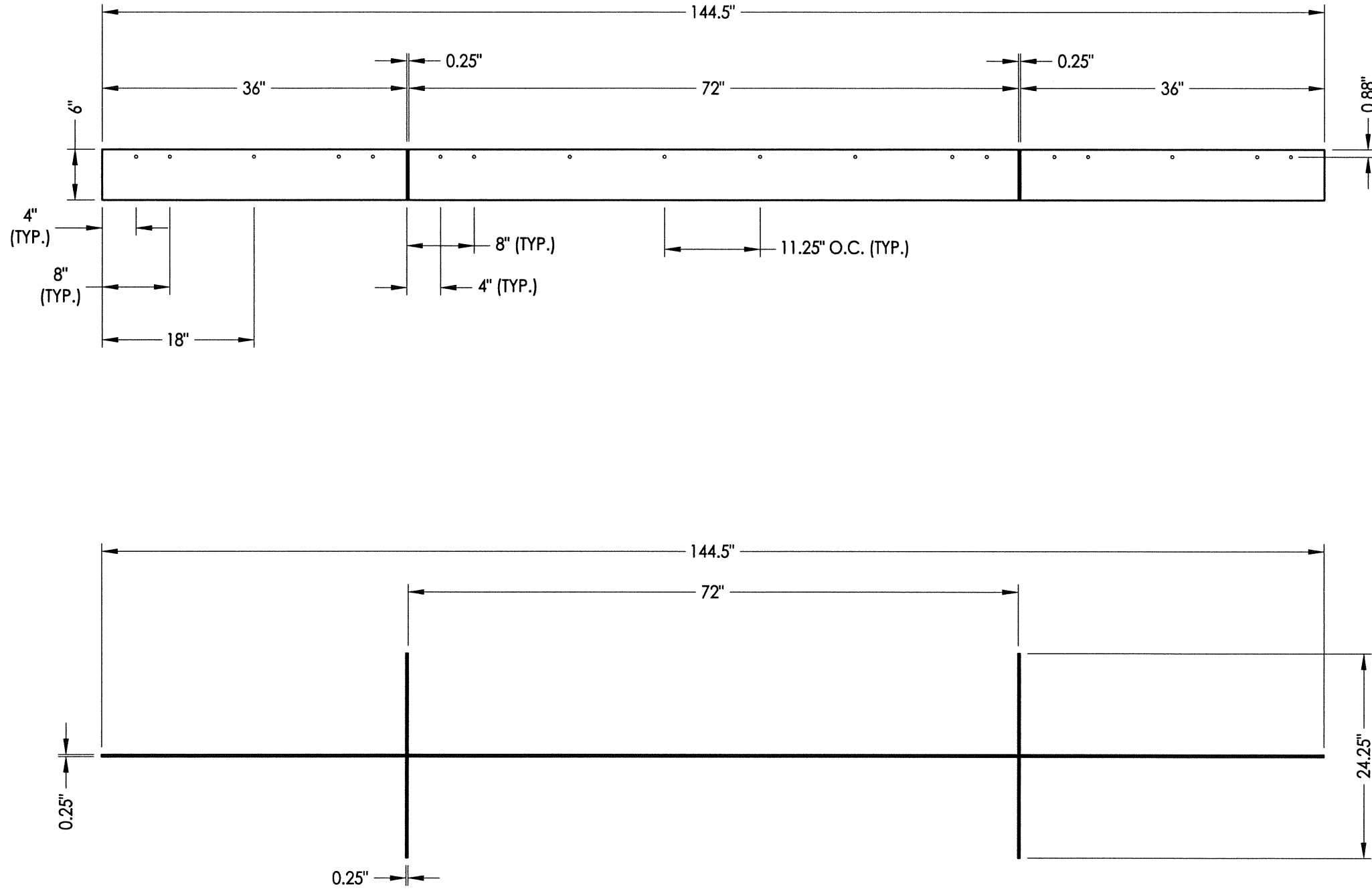
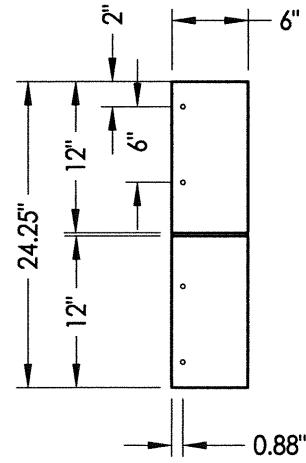


- CONCRETE ANCHOR NOTES:**
- Concrete anchor locations at the corners may be adjusted to maintain the min. edge distance to mortar joints.
 - Concrete anchor locations noted as "MAX. ON CENTER" must be adjusted to maintain the min. edge distance to mortar joints, additional concrete anchors may be required to ensure the "MAX. ON CENTER" dimension are not exceeded.
 - Concrete anchor table:

ANCHOR TYPE	ANCHOR SIZE	MIN. EMBEDMENT	MIN. CLEARANCE TO MASONRY EDGE	MIN. CLEARANCE TO ADJACENT ANCHOR
ITW TAPCON®	3/16"	1-1/4"	3"	2-1/2"
	1/4"	1-1/4"	2-1/2"	4"
	5/16" (XL)	1-3/4"	2-1/2"	5"
ELCO ULTRACON®	1/4"	1-1/4"	2-1/2"	4"
	5/16"	1-3/4"	2-1/2"	5"

Documents Prepared By:
RW BUILDING CONSULTANTS, INC.
 P.O. Box 230 Valrico FL 33595
 Phone No.: 813.659.9197
 Florida Board of Professional Engineers
 Certificate of Authorization No. 9813
 17-PL-12-30-13
 Lyndon F. Schmidt, P.E. No. 43409

PRODUCT:	CLARK HALL IRON DOORS
PART OR ASSEMBLY:	FRAME ANCHORING
NO.	DATE
BY	REVISIONS
DATE:	11/8/13
SCALE:	N.T.S.
DWG. BY:	JK
CHK. BY:	LFS
DRAWING NO.:	FL-16663.12
SHEET	10 OF 13



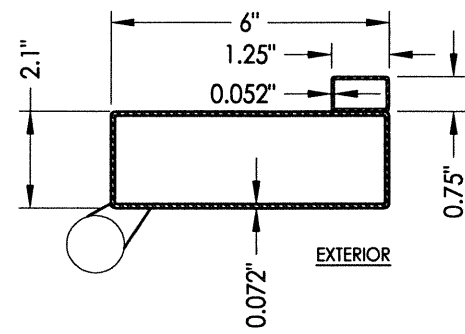
35 MULLION REINFORCEMENT

DATE: 11/8/13
 SCALE: N.T.S.
 DWG. BY: JK
 CHK. BY: LFS
 DRAWING NO.: FL-16663.12
 SHEET 11 OF 13

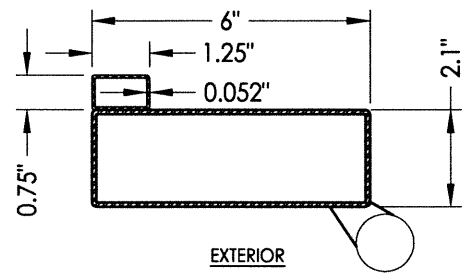
NO.	DATE	BY	REVISIONS

PRODUCT: CLARK HALL IRON DOORS
 PART OR ASSEMBLY: MULLION REINFORCEMENT

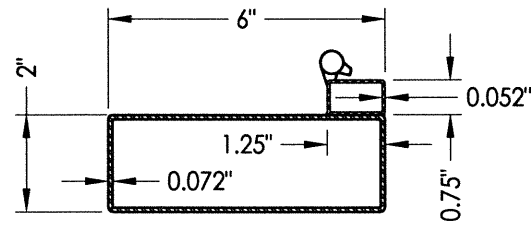
Documents Prepared By:
RW BUILDING CONSULTANTS, INC.
 P.O. Box 230 Valrico FL 33595
 Phone No.: 813.659.9197
 Florida Board of Professional Engineers
 Certificate of Authorization No. 9813
LFS 12-30-13
 Lynden F. Schmidt, P.E. No. 43409



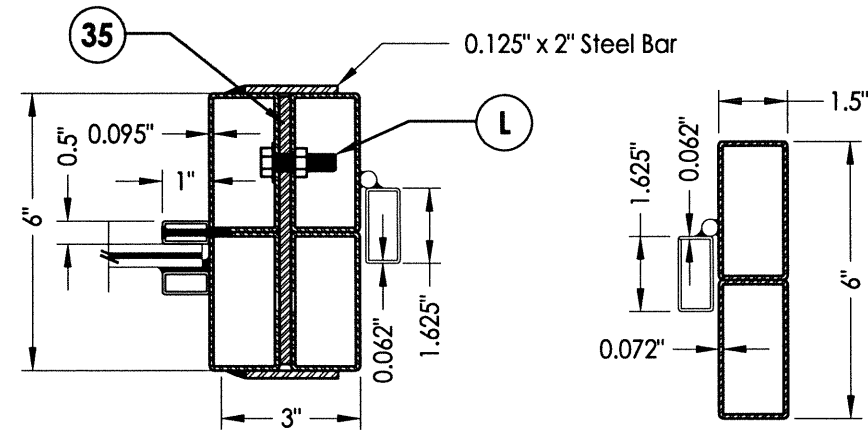
41 Full Lite Door Panel
Inactive Hinge Stile



31 Full Lite Door Panel
Active Hinge Stile

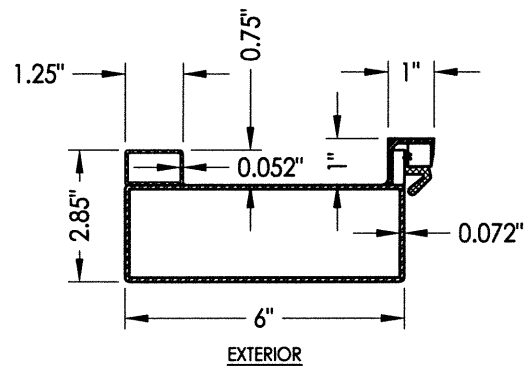


51 Sidelite Panel
Operable Sash Hinge Stile

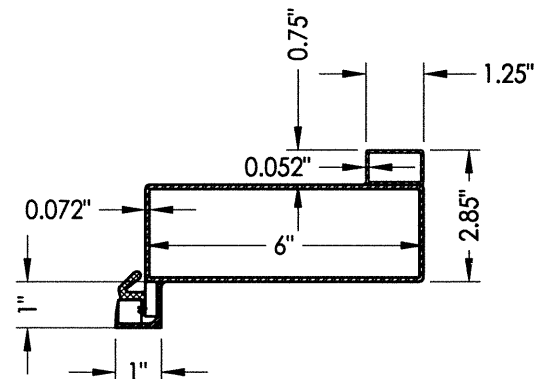


75 MULLION
Vertical with Direct Set Sidelite shown
(Horizontal Mullion Similar)

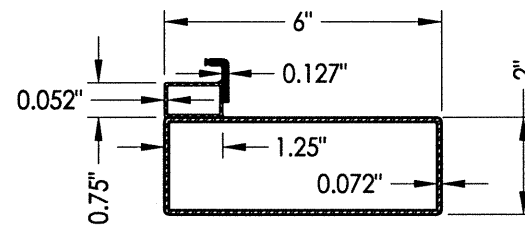
76 Jamb



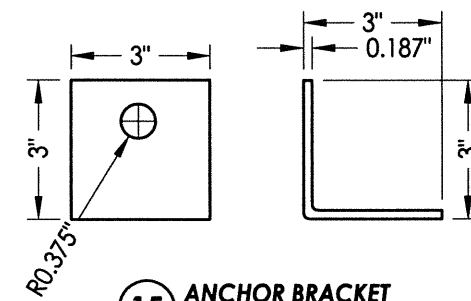
42 Full Lite Door Panel
Inactive Latch Stile



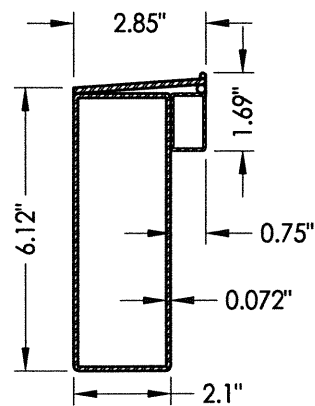
32 Full Lite Door Panel
Active Latch Stile



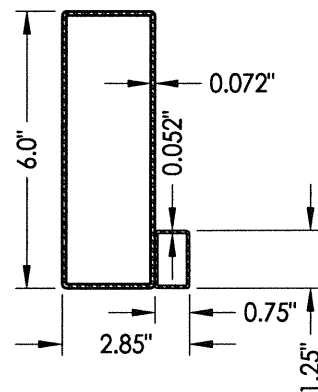
52 Sidelite Panel
Operable Sash Latch Stile



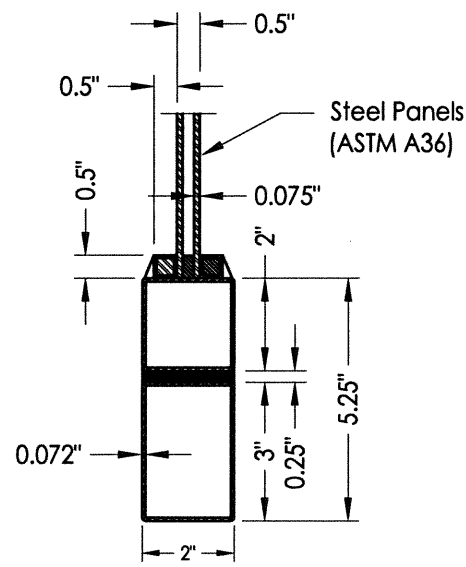
15 ANCHOR BRACKET



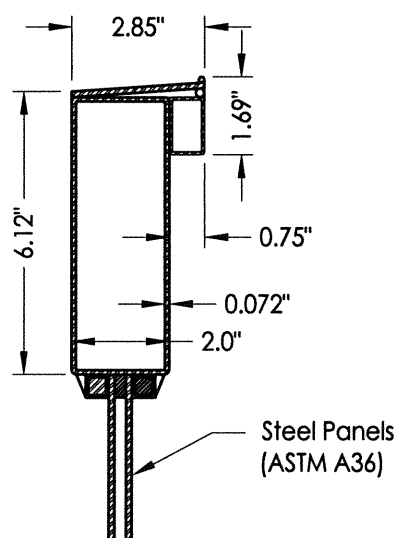
43 Full Lite Door Panel
Bottom Rail



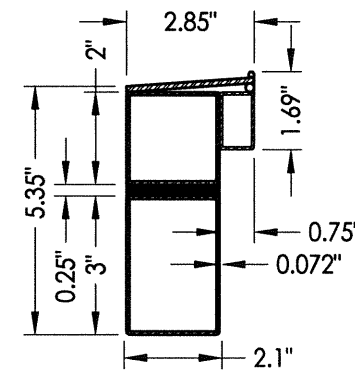
44 Full Lite Door Panel
Top Rail



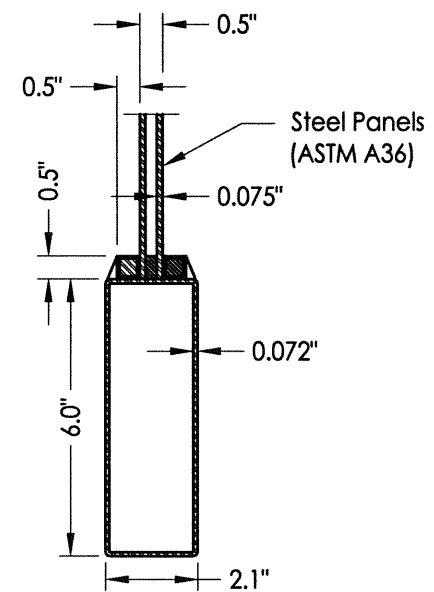
54 Bottom Rail
3/4 Lite Sidelite Panel



56 Mid Rail
3/4 Lite Sidelite Panel



53 Bottom Rail
Sidelite Panel



57 Bottom Rail
3/4 Lite Door Panel

PRODUCT:	CLARK HALL IRON DOORS
PART OR ASSEMBLY:	COMPONENTS

NO.	DATE	BY

DATE:	11/8/13
SCALE:	N.T.S.
DWG. BY:	JK
CHK. BY:	LFS
DRAWING NO.:	FL-16663.12
SHEET	12 OF 13

Documents Prepared By:
RW BUILDING CONSULTANTS, INC.
 P.O. Box 230 Valrico FL, 33595
 Phone No.: 813.659.9197
 Florida Board of Professional Engineers
 Certificate of Authorization No. 9813
 12.20.13
 Lyndon F. Schmidt, P.E. No. 43409

